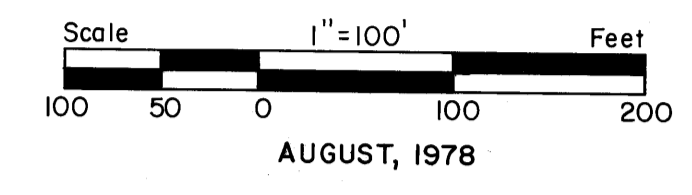
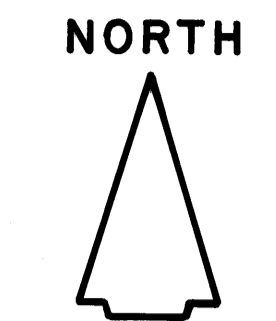


PHASE TWO, MID-RIVERS YACHT AND COUNTRY CLUB

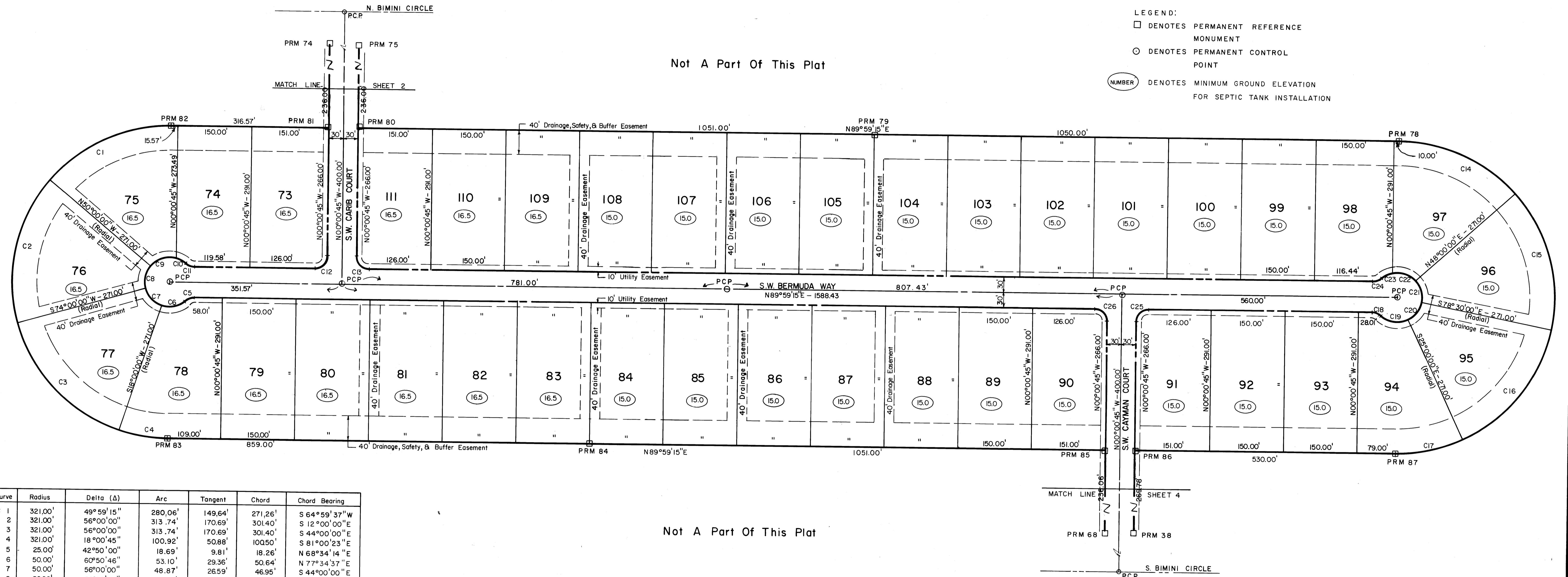
Lying In
Sections 2 & 3, Township 38 South, Range 40 East
Martin County, Florida

I, LOUISE V. ISAACS, CLERK OF THE CIRCUIT COURT OF MARTIN COUNTY, FLORIDA, HEREBY CERTIFY THAT THIS PLAT WAS FILED FOR RECORD IN PLAT BOOK 7, PAGE 60, MARTIN COUNTY FLORIDA, PUBLIC RECORDS, THIS DAY OF , 1978.

FILE NO. _____ BY: _____ DEPUTY CLERK



- LEGEND:
- DENOTES PERMANENT REFERENCE MONUMENT
 - DENOTES PERMANENT CONTROL POINT
 - (NUMBER) DENOTES MINIMUM GROUND ELEVATION FOR SEPTIC TANK INSTALLATION



Curve	Radius	Delta (Δ)	Arc	Tangent	Chord	Chord Bearing
C 1	321.00'	49°59'15"	280.06'	149.64'	271.26'	S 64°59'37" W
C 2	321.00'	56°00'00"	313.74'	170.69'	301.40'	S 12°00'00" E
C 3	321.00'	56°00'00"	313.74'	170.69'	301.40'	S 44°00'00" E
C 4	321.00'	18°00'45"	100.92'	50.88'	100.50'	S 81°00'23" E
C 5	25.00'	42°50'00"	18.69'	9.81'	18.26'	N 68°34'14" E
C 6	50.00'	60°50'46"	53.10'	29.36'	50.64'	N 77°34'37" E
C 7	50.00'	56°00'00"	48.87'	26.59'	46.95'	S 44°00'00" E
C 8	50.00'	56°00'00"	48.87'	26.59'	46.95'	S 12°00'00" W
C 9	50.00'	68°08'12"	59.46'	33.81'	56.02'	S 74°04'06" W
C 10	50.00'	24°41'02"	21.54'	10.94'	21.37'	N 59°31'16" W
C 11	25.00'	42°50'00"	18.69'	9.81'	18.26'	N 68°35'45" W
C 12	25.00'	90°00'00"	39.27'	25.00'	35.36'	S 44°59'15" W
C 13	25.00'	90°00'00"	39.27'	25.00'	35.36'	S 45°00'45" E
C 14	321.00'	48°00'45"	268.99'	142.96'	261.19'	S 66°00'23" E
C 15	321.00'	53°30'00"	299.73'	161.80'	288.96'	S 15°15'00" E
C 16	321.00'	53°30'00"	299.73'	161.80'	288.96'	S 38°15'00" W
C 17	321.00'	24°59'15"	139.99'	71.13'	138.89'	S 77°29'37" W
C 18	25.00'	42°50'00"	18.69'	9.81'	18.26'	N 68°35'45" W
C 19	50.00'	67°49'15"	59.18'	33.61'	55.79'	N 81°05'23" W
C 20	50.00'	53°30'00"	46.69'	25.20'	45.01'	S 38°15'00" W
C 21	50.00'	53°30'00"	46.69'	25.20'	45.01'	S 15°15'00" E
C 22	50.00'	59°32'58"	51.97'	28.61'	49.66'	S 71°46'29" E
C 23	50.00'	31°17'47"	27.31'	14.01'	26.97'	N 62°48'08" E
C 24	25.00'	42°50'00"	18.69'	9.81'	18.26'	N 68°34'15" E
C 25	25.00'	90°00'00"	39.27'	25.00'	35.36'	S 44°59'15" W
C 26	25.00'	90°00'00"	39.27'	25.00'	35.36'	S 45°00'45" E

Not A Part Of This Plat